

# SHEET METAL WORKER

## What does a Sheet Metal Worker do?

Sheet metal workers make, install, and maintain heating, ventilation, and air-conditioning duct systems; roofs; siding; rain gutters; downspouts; skylights; restaurant equipment; outdoor signs; railroad cars; tailgates; customized precision equipment; and many other products made from metal sheets. They also may work with fiberglass and plastic materials. In addition to installation, some sheet metal workers specialize in testing, balancing, adjusting, and servicing existing air-conditioning and ventilation systems to make sure they are functioning properly and to improve their energy efficiency. Professionally installed duct systems are a key component to heating, ventilation, and air-conditioning (HVAC) systems, which causes duct installers to sometimes be referred to as *HVAC technicians*. A duct system allows for even air distribution while minimizing leaks and temperature differentiation that can cause other problems, such as mold.

## Working conditions.

Sheet metal workers may fabricate sheet metal products in shops that are well-lighted and well-ventilated. However, they stand for long periods and lift heavy materials and finished pieces. Sheet metal workers must follow safety practices because working around high-speed machines can be dangerous. They also are subject to cuts from sharp metal, burns from soldering and welding, and falls from ladders and scaffolds. Those performing installation work do considerable bending, lifting, standing, climbing, and squatting, sometimes in close quarters or in awkward positions. Although duct systems and equipment are often installed indoors, the installation of siding, roofs, and gutters involves much outdoor work, requiring sheet metal workers to be exposed to various kinds of weather.

## What are the programs specifics?

4-year Apprenticeship:

8000 hours of "On the Job Training" with a local contractor / employer

800 hours of classroom (Related Instruction)

Wages & Benefits:

Starting wage rate: 50% of Journeyman wage rate

Full Medical Insurance and Pension plans

Cost of Training:

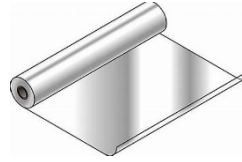
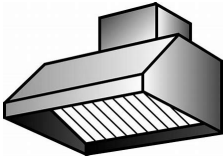
There is no cost for training, but the apprentice must be a dues paying member of the Sheet Metal Workers Local Union.

Area of Coverage:

State of Connecticut; Apprentice must possess dependable transportation and be willing and able to travel to any jobsite as required

Sheet Metal Worker Licensing Requirements:

Because the trade of Sheet Metal Worker is a licensed trade, all graduate apprentices must successfully pass a State of Connecticut examination to be classified as Journeyman Sheet Metal Workers.



## What do I need to apply?

Must be 18 years of age  
Must have a valid Connecticut driver's license  
Must have a High School Diploma or GED  
Must pass a drug and alcohol screening test

## Where do I apply?

Applications are accepted year-round, and apprentices are accepted and placed by contractor request. Contact: (please call or write to request an interview, Hours of Operation: 8:00AM – 4:30 PM)

**Sheet Metal Workers LU #40, JATC**  
100 Old Forge Road  
Rocky Hill, CT. 06067  
Telephone: 860-529-2616 Ext. 417  
Fax Number: 860-529-3686

**Fairfield and Litchfield Counties**  
Sheet Metal Workers LU #38 Craft Training Fund  
38 Starr Ridge Road  
Brewster, NY 10509  
Telephone: 845-278-6983 Ext. 110  
Fax Number: 845-279-1077  
E-Mail: [rdutra@sheetmetallocal38.org](mailto:rdutra@sheetmetallocal38.org)

### Website Links:

Local JATC: [www.smwlocal40.org](http://www.smwlocal40.org)  
International Association: [www.smart-union.org](http://www.smart-union.org)  
Contractor's Association: [www.smacna.org](http://www.smacna.org)