

ELECTRICIAN INSIDE WIREMAN

What does an Electrician do?

Construction electricians work in all phases of electrical construction and service industry. They perform electrical construction and service work ranging from small single-family dwellings to large-scale facilities. These facilities include retail shopping centers, hospitals, high-rise office and apartment buildings, state of the art schools and universities, manufacturing plants, bio-medical laboratories, chemical plants, and nuclear power plants. Electrical workers install conduits, wires, and cables, plugs and switches, lighting and power distribution systems, emergency power systems and telecommunication systems. Telecommunications consist of voice, video, and data installations. Electricians must be able to work from blueprints, layout, assemble, repair, test and troubleshoot all electrical and electronic systems. They must be able to work well with other craftsman while following all safe work practices and following all the national electrical codes required for a safe and quality installation.

Working conditions.

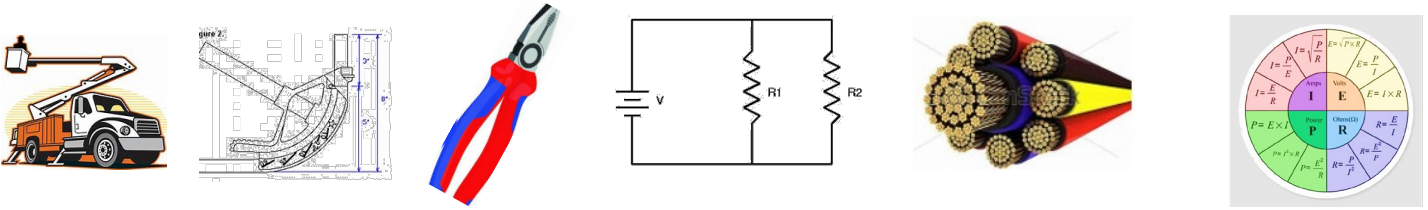
This type of work is done in full range of environmental conditions to include outside in dirt, cold, sun, rain, and snow; inside in climate-controlled modern offices and industrial manufacturing plants. The work can require considerable lifting, kneeling, pulling of long lengths of cables, reaching, and working overhead for long periods of time. Work may require one to work in tight close quarters, ditches, manholes and other confined spaces. Other times one need to work off ladders or other styles of aerial equipment at great heights to complete tasks.

What are the programs specifics?

- Length of program – 5 Years
- 8000 Hours of on-the-job training
- Over 1000 Hours of related classroom instructions
- Eligible to receive college credits
- Starting pay 40% to 50% of journeyman rate with increases after completing required on-the-job training hours and related classroom hours.

What do I need to apply?

- Must be at least 18 years old
- High school graduate or GED
- Must have one year of algebra with a passing grade
- Submit an official copy of a high school transcript
- Pass a validated aptitude test
- Complete an oral interview



Where do I apply?

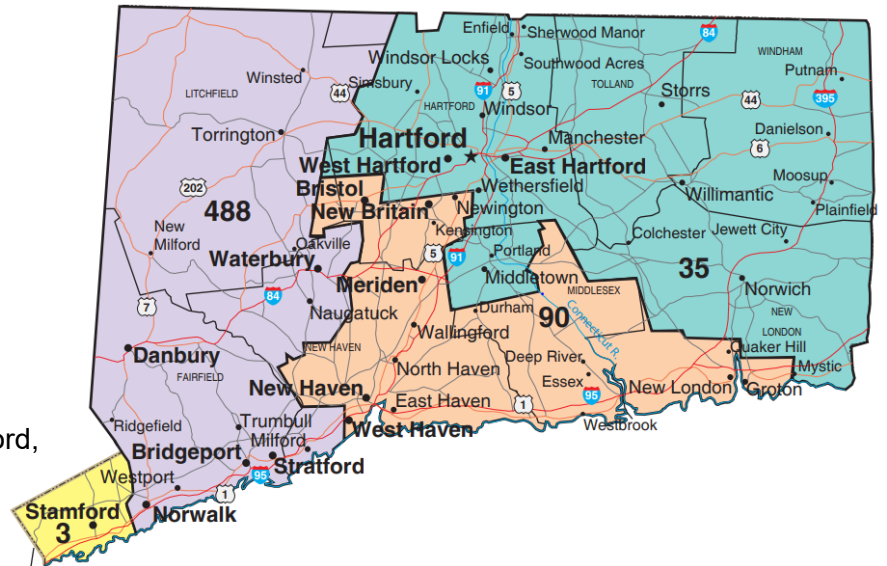
**Westchester-Fairfield
IBEW Local 3**
200 Bloomingdale Road
White Plains, NY 10605
914-946-0472 Phone
914-683-1892 Fax

**Hartford Electricians
IBEW Local 35**
208 Murphy Road
Hartford, CT 06114
860-525-5982 Phone
860-278-4373 Fax
info@ibewlocal35.org

**NECA & IBEW Local 90 JATC
IBEW Local 90**
2 N. Plains Industrial Rd Wallingford,
CT 06492
203-265-3820 Phone
203-265-6875 Fax
www.jatc90.org
contact@jatc90.org

**IBEW – NECA JATC
IBEW Local 488**
721 Main Street
Monroe, CT 06468
203-452-7679 Phone
203-459-2553 Fax
jatc488@yahoo.com

CONNECTICUT IBEW Inside Jurisdiction



Websites:

International Brotherhood of Electrical Workers www.ibew.org
 IBEW Local 35 www.ibewlocal35.org
 IBEW Local 90 www.ibewlocal90.org
 IBEW Local 488 www.ibewlocal488.org
 National Electrical Contractors Association www.necanet.org
 Connecticut Chapter of NECA www.necact.org